

*The Digital Potential:  
Making Digital Objects  
More Than a TIFF Image  
and a MODS Record*

Rebecca Ciota  
Discovery & Integrated Systems Librarian  
Grinnell College



# Background



[Home](#) [Browse Repository](#) [Exhibitions](#) [Conferences](#) [Journals](#) [About Digital Grinnell](#)



## **Scholarship at Grinnell**

Publications, research papers and posters, performance programs, and other materials that document the scholarly and creative accomplishments of Grinnell College's students, faculty and staff, as well as syllabi, handouts, and related materials created by Grinnell College faculty for courses at Grinnell.



## **Poweshiek History Preservation Project**

PHPP is a digital archive of the Poweshiek County area that includes materials contributed by individuals and items from the Drake Community Library, Grinnell College and area historical museums. PHPP volunteers can help scan items contributed by individuals by appointment. Items can also be submitted in digital form by individuals. The project is also collecting oral histories which are conducted by volunteers.



## **Falconer Art**

The Falconer Gallery, Grinnell College Art Collection includes over 4000 works of art, featuring works on paper (prints, drawings, and photographs), many in portfolios. The collection spans Medieval to contemporary art, with a strength in 20th and 21st-century European and American art. The collection also includes paintings, sculptures, and ceramics, along with small holdings of African, Pueblo, Seri, and Near Eastern material. Falconer Gallery in the Bucksbaum Center for the Arts serves as the College's art museum, presenting changing exhibitions and providing a separate print room in Burling Library for study of the collection.



## **Grinnell College Libraries Special Collections and Archives**

Digitized copies of materials housed in Grinnell College's Special Collections and Archives, including photographs, letters, and documents. Collections included are Early College History, George Washington Cook Correspondence, 1857-1860, Grinnell College Buildings, the Jimmy Ley Collection, the John Kleinschmidt Architectural History Collection, Life at Grinnell College, and Grinnell in China.



<b>Title</b>	Pecopteris
<b>Contributor</b>	Park, Jongbeom
<b>Faculty Sponsor</b>	Graham, Andrew
<b>Import Index</b>	27
<b>Geographic</b>	Mazon Creek, Grundy Co., Ill., Coal Measures
<b>Temporal</b>	Pennsylvanian, Upper Carboniferous Francis Creek Shale
<b>Type Of Resource</b>	still image
<b>Genre</b>	photograph
<b>Extent</b>	1
<b>Identifier (Local)</b>	EM-07-27
<b>Identifier (Local)</b>	grinnell:17049
<b>Identifier (Hdl)</b>	<a href="http://hdl.handle.net/11084/17049">http://hdl.handle.net/11084/17049</a>
<b>Access Condition</b>	I permit others to copy, distribute, display and perform the work for non-commercial purposes.



## Republican Denarius 130 BCE

View Download Cover Sheet Add An Annotation



Obverse: Helmeted head of Roma, right; behind, Latin inscription: Q·METE (ME and TE ligatured); before, denominational mark: X (crossed). Border of dots.  
Reverse: Jupiter in quadriga, right, holding thunderbolt and reins in left hand and branch in right hand; in exergue, Latin inscription: ROMA. Line border.





Fire at Fourth Avenue and State Street in Grinnell, Iowa. Possibly the Bell Camera Company building which burned in 1918. Photo by Child. Drake Community Library (Grinnell, Iowa) Archives. Miscellaneous photographs. Collection #17-5, Views of Grinnell.

[Home](#) » [DG Annotation Webform](#) » [Webform results](#)

[Resend e-mails](#) [List ALL Submissions](#) [Ingest this Submission](#)

#### Submission information

Form: [DG Annotation Webform](#)

Submitted by Guest (not verified)

Tue, 2017-02-07 10:07

98.22.102.131

#### Annotation Type

Correction

#### Submission

This is the 1925 fire at JW Norris' business at Fourth and State in Grinnell.

#### Full Name

Holmes, Marilyn Norris

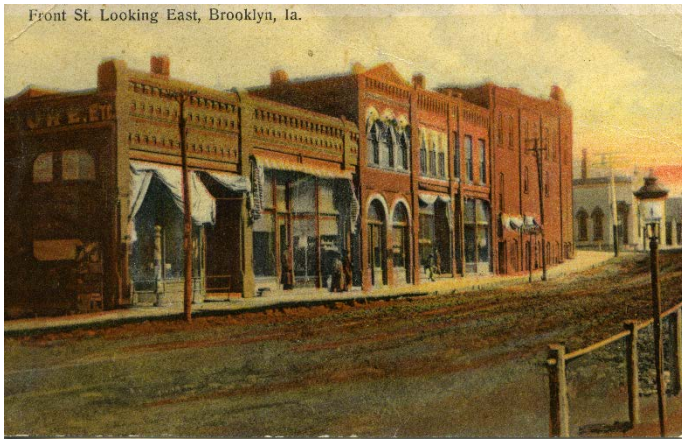
#### Class Year

#### Islandora Object PID

grinnell:12243







**Cartographic** 41.728137, -92.447639

<b>Title</b>	Front Street looking east, Brooklyn, Iowa
<b>Type Of Resource</b>	Still image
<b>Genre</b>	postcard
	Grinnell College Libraries Special Collections
<b>Note</b>	Purchase or donation
<b>Note</b>	Scanned with HP Scanjet 4670 at 600 ppi. Archival master image available in pdf format.
<b>Identifier (Local)</b>	ihpc_brooklee0018
<b>Language</b>	English
<b>Index Date</b>	1909
<b>Date Issued</b>	1909
<b>Physical Extent</b>	1 postcard : color : 9 x 14 cm.
<b>Medium</b>	Dual photo color report, divided back. Printed in Germany.
<b>Cartographic</b>	41.728137, -92.447639
<b>Classification</b>	MS 108, Box 1, ihpc_brooklee0018
<b>Topic</b>	Dirt roads
<b>Topic</b>	Poweshiek County (Iowa)
<b>Topic</b>	Brooklyn (Iowa)
<b>Topic</b>	Commercial streets
<b>Topic</b>	Commercial facilities
<b>Topic</b>	Stores & shops
<b>Related Item</b>	Iowa Historical Postcard Collection (IHPC)
<b>Related Item</b>	Grinnell College, Special Collections and Archives
<b>Related Item</b>	Digital Grinnell
<b>Access Condition</b>	Grinnell College Libraries does not own the copyright in these images and therefore cannot give or deny permission to publish or distribute any of them. It is the researcher's responsibility to determine and satisfy copyright or other use restrictions when publishing or distributing material from this collection. Any materials used must carry a credit line: Historic Iowa Postcard Collection, Special Collections and Archives, Grinnell College Libraries.
<b>Identifier (URL)</b>	<a href="http://hdl.handle.net/11084/18201">http://hdl.handle.net/11084/18201</a>



Made with Scribble Maps



# Acknowledgements

Monessa Cummins, Associate Professor, Department Chair of Classics, Grinnell College

Ann Sherif, Professor of Japanese, Oberlin College

Mark McFate, Digital Library Applications Developer, Grinnell College

# References

Taormina, M. (2014). Engage Those Senses! Surrogates Are Not Enough. In *Using Primary Sources* (pp. 144-148). Santa Barbara, CA: ABC-CLIO, LLC.



# Questions

