

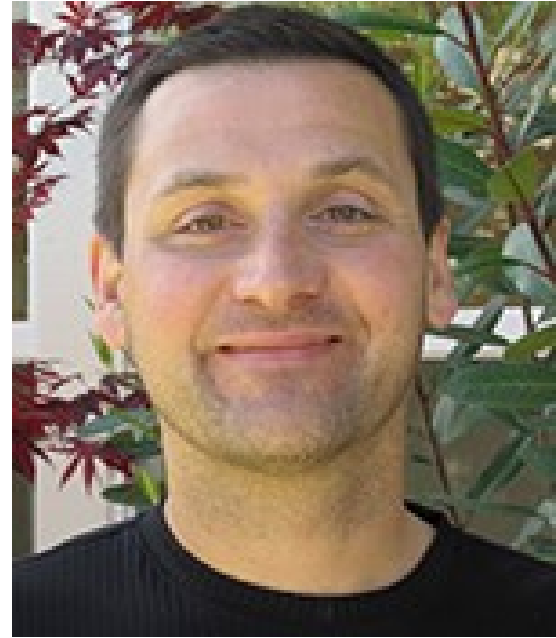
# Dr. Chris Kello

*Professor at University of California Merced  
Director of the Cognitive Mechanics Lab*

## Human data science in academia and industry: Trends, careers, and challenges

March 12, 12pm, JRC101

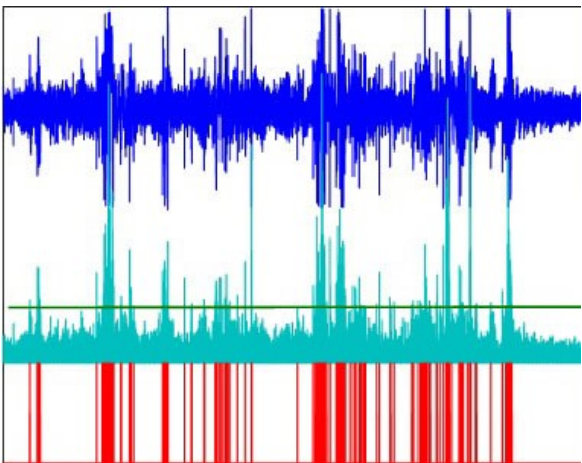
Past, present, and future directions of using data to understand ourselves and our behaviors.



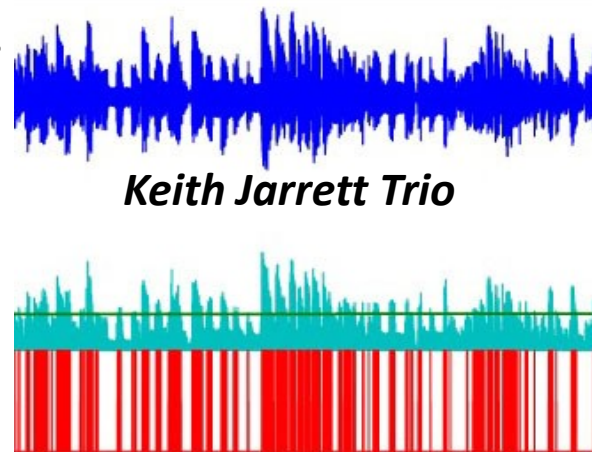
## The complexity of sound in speech, song, and music

March 12, 4pm, SCI 2022

“We know animals communicate, but **how close** are their howls and calls to human language? Or are those communications more like music?”



*Orca calls*



*Keith Jarrett Trio*

“Examining what he calls **temporal hierarchy** in **over 200 recordings of animals, humans, and music**, he found similarities between species that have conversation versus those who sing in solitude.”

<http://www.capradio.org/105204>

Sponsored by the Carver Grant (PI: Shonda Kuiper) and Innovation Fund’s GCIEL Speaker Series (PI: David Neville)