

PANEL DISCUSSION

DISABILITY

AND

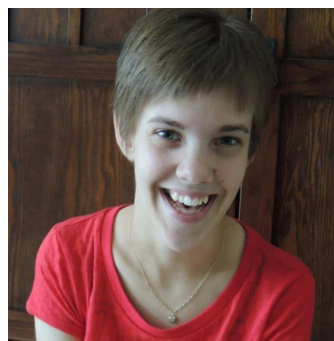
IDENTITY



---

**Astrid Henry**

*Professor of gender, women's,  
and sexuality studies*



---

**Jennifer Brooks '15**

*Sociology  
Doctoral student at Syracuse  
University*



---

**Carolyn Lewis**

*Assistant professor of history  
Chair of the gender, women's,  
and sexuality studies program*



---

**Rebecca Hsiung '19**

*English  
Campus access leader*



---

**Maure Smith-Benanti**

*Associate dean of students  
Director of intercultural affairs*



---

**Christina Collins '21**

*Mental health advocate*

**7 p.m. Friday, April 20, 2018**  
**JRC, Room 101**

This event is **free** and **open** to the public

**Accessibility questions?** For questions concerning access or to request accommodation for a disability, please contact Maddie O'Meara '17, [omearama@grinnell.edu](mailto:omearama@grinnell.edu).

**Important:** Minors under age 18 need to be accompanied by an adult. Grinnell College is not responsible for supervision of minors on campus.